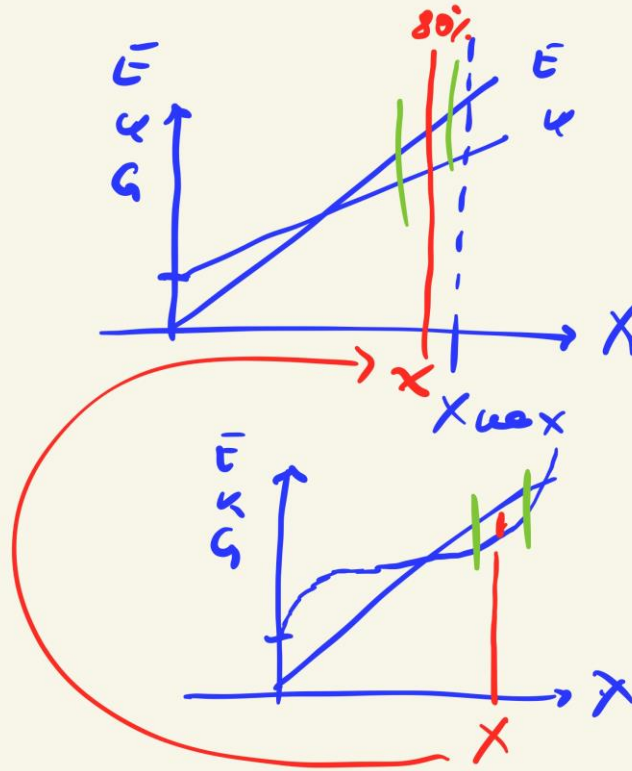


VW

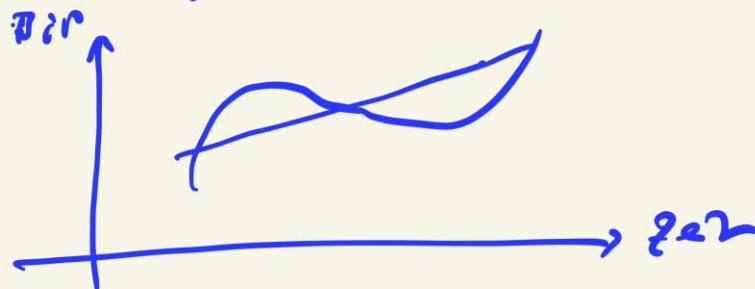


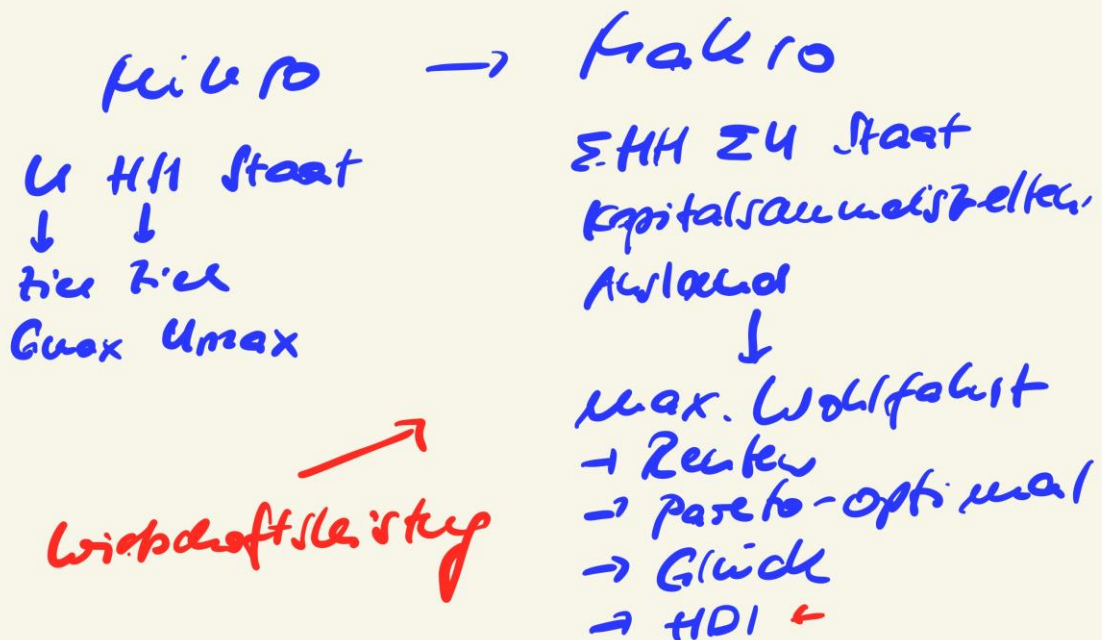
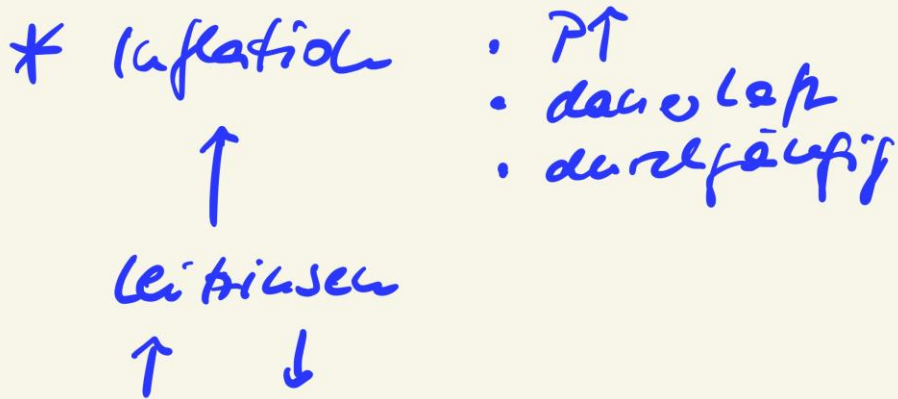
Rezeptions + 2 quartale
 neg. W-Rate

Konjunktur

Konjunkturpolitik

→ antizyklisch





Wirtschaftskreislauf
 (BSP)

Kapitel 6

- (1) BIP BNE VE
- T T
 Verkauf → Einkommen
 → Wertschöpfend
- Bäcker ✓
 - Friseur ✓
 - Brauerei ✓
 - Umweltindustrie ✓
 - Schwarzbrot ✓
 - Kaugummi -

- Normsätze
- IWF (IMF)
 - Eurostat
 - ESVG
 - destatist. de
 - LA

(2) $BIP = NIP + \text{Abschreibungen}$
 $BNE = NNE + \text{Abschreibungen}$
 Wertübertragungs
 Inv. → Preise
 P_{kt}

