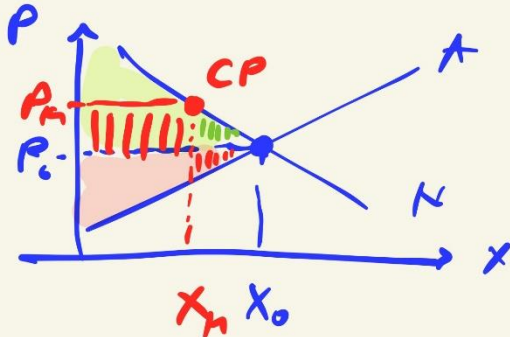


Zerwerfung

* PA 1



PT $X \downarrow$ \ominus

Rekt \ominus

▨ Tribut \ominus
 der Kons. an Monopol

- (+) Refinanz. von Kosten f. FolE
- (+) Schaffung / Unterhalt Netze
- (+) Normsetzung

K	FK
Guax	Guax
$k' = \epsilon'$	$k' = p$
Kauf-/	Kauf-
Preis-	anpass
fixier	

$$k = 10 + 1.25x^2 \quad x = 42 - 2p$$

$$k' = \epsilon'$$

$$\downarrow$$

$$k' = 2.5x$$

$$\epsilon = p \cdot x$$

$$\rightarrow p = 21 - 0.5x$$

$$\epsilon = (21 - 0.5x)x$$

$$\epsilon = 21x - 0.5x^2$$

$$\epsilon' = 21 - x$$

$$2.5x = 21 - x$$

$$x = 6$$

$$p = 18$$

Voraussetz. für idealen Markt

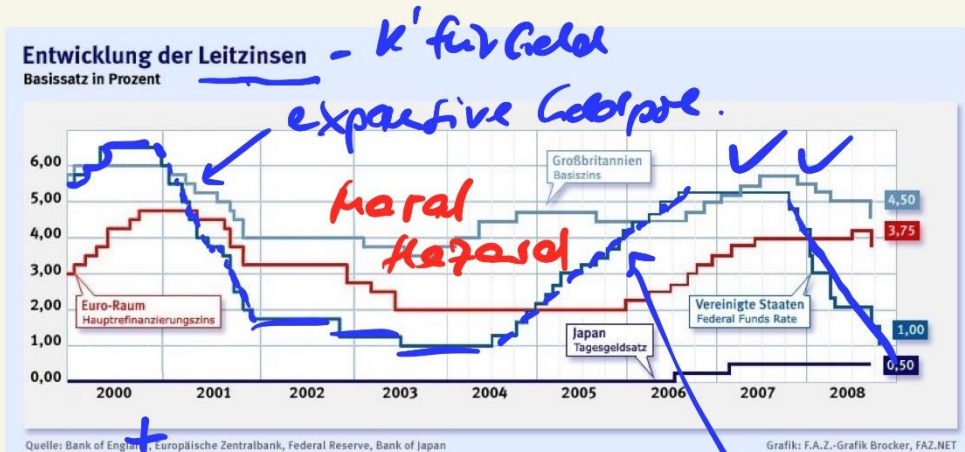
- ↳ Transparenz
- ↳ Perfectmarkt
- ↳ Polypol



Prinzipal-Agenten-Verhältnis

- verborgene Eigenschaften
- adverse Selektion
- moral hazard

$\Delta t \rightarrow 0$
time lag
↓

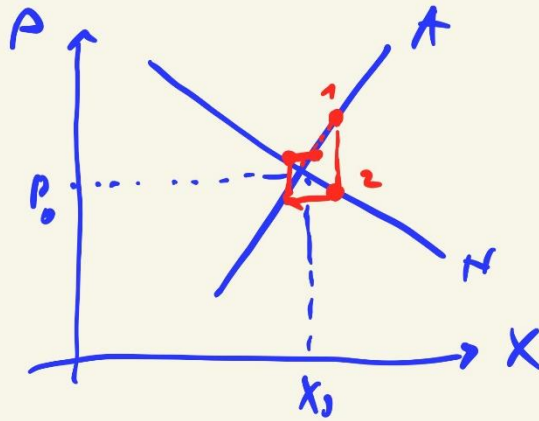


Handbau
Steuer

ATISF-Kredit

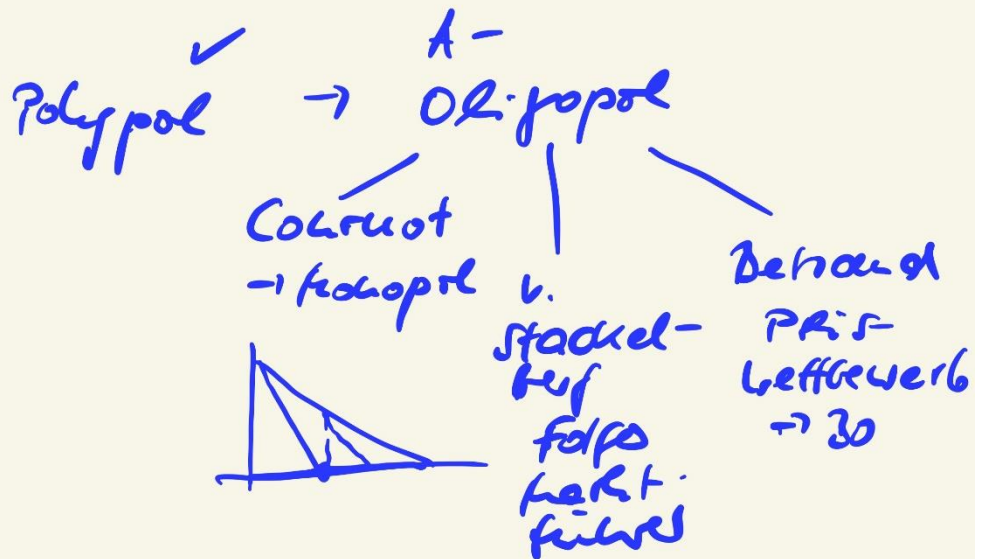
Normalität

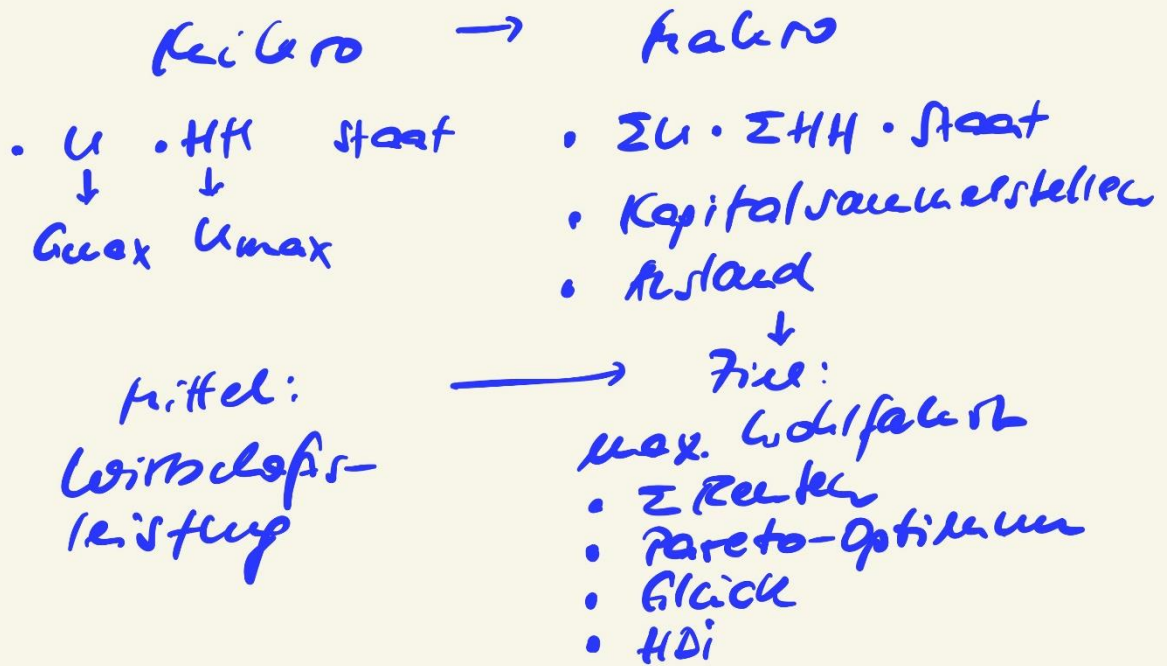
„Schwartzzyklus“



→ Cobweb-
Reaktion

(? *)





Wohlfahrtsleistung

