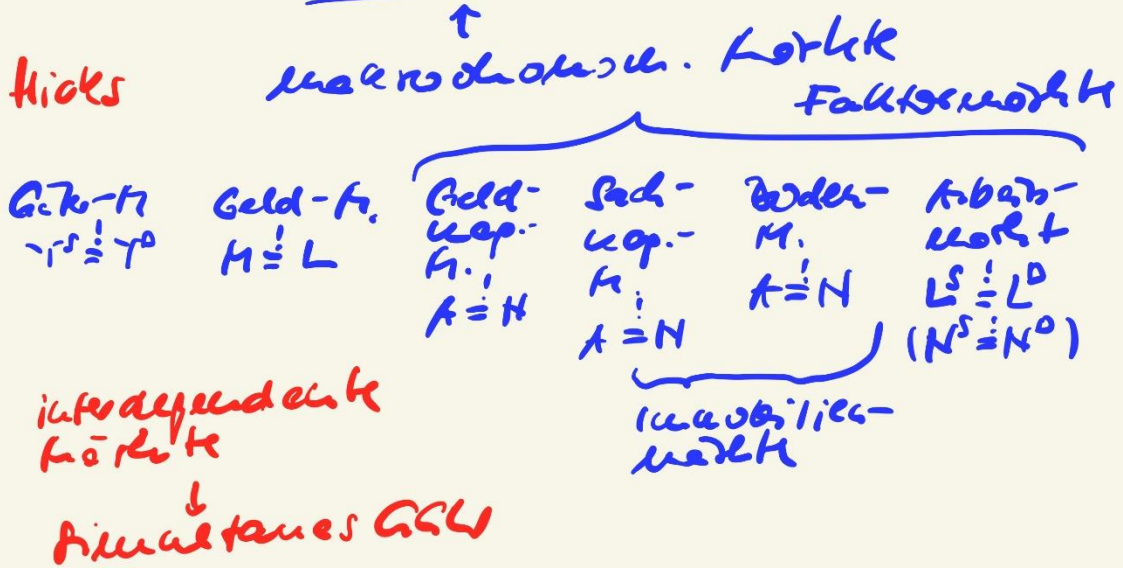
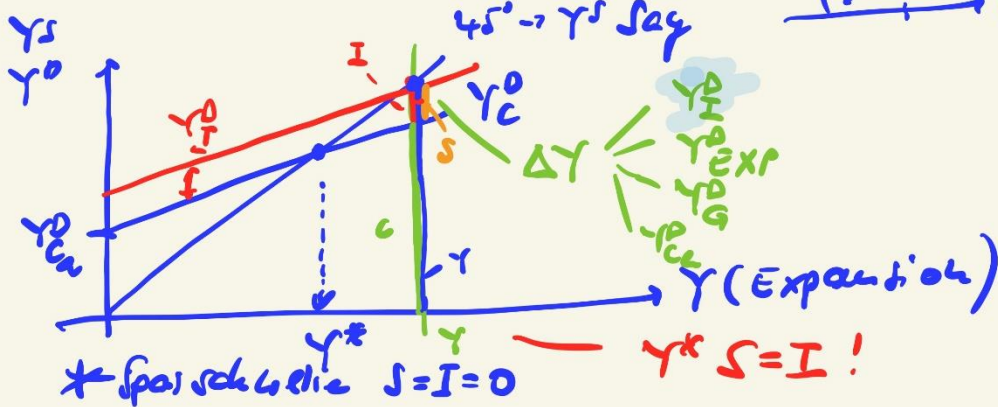


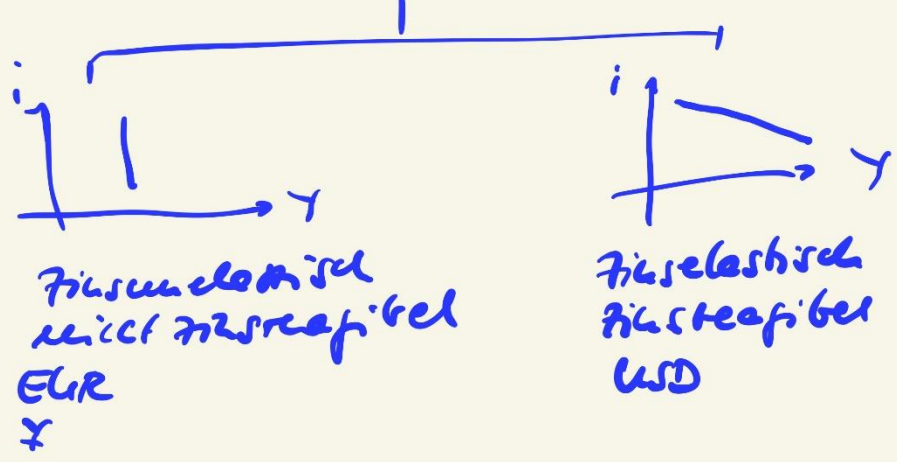
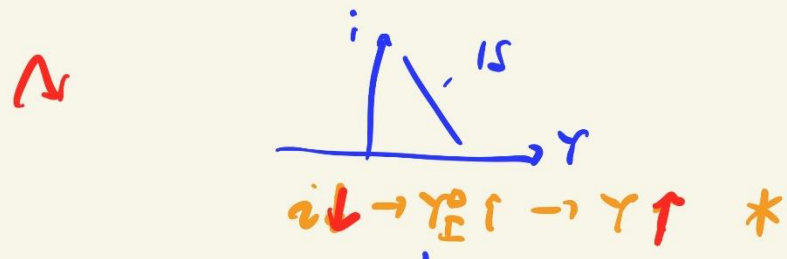
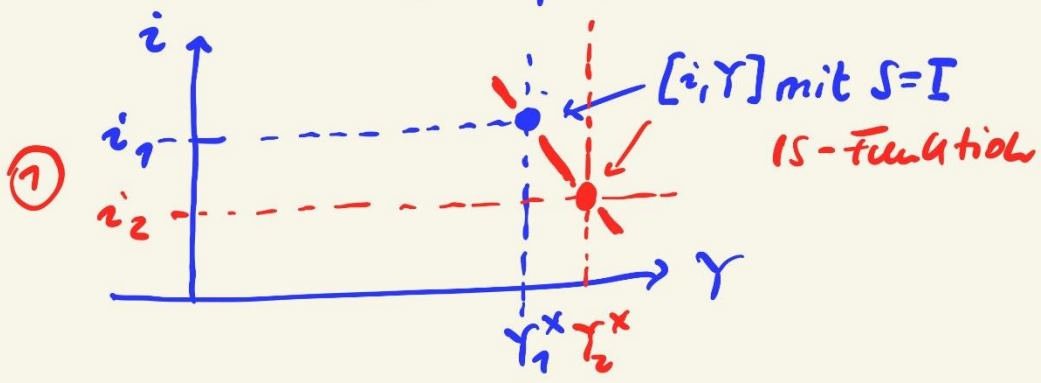
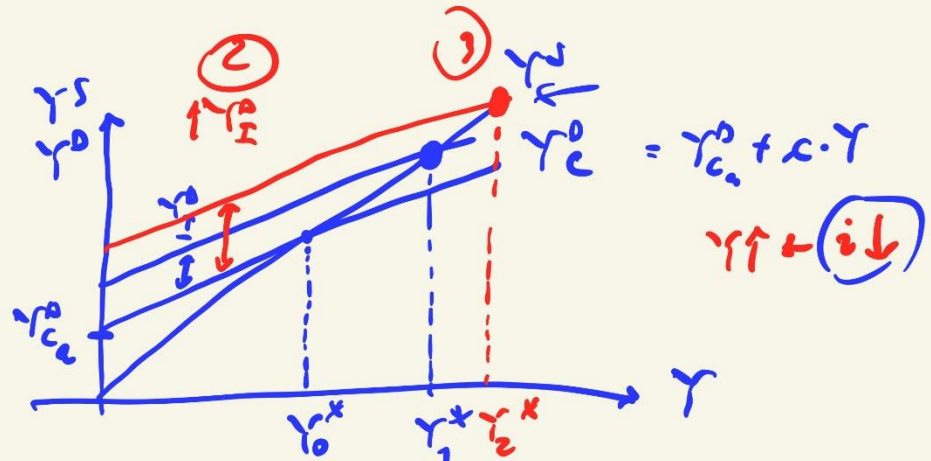
ISLM-Modell



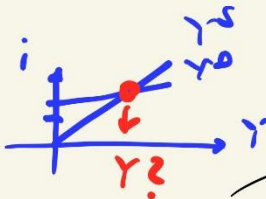
① makroökonomische Gütermarkt



$Y^D$  - eink. unabhängige Konsum  
 $Y^C$  (autonome Konsum)



①



$$Y^S = Y^D = Y^*$$

↳ VERB.-KURVE TIP

$$Y^D = Y_C^D + \frac{I}{s} + \frac{G}{s} + \frac{EXP - IMP}{s}$$

$$Y^D = Y_C^D + \dots$$

$$Y_C^D = Y_C^D + c(1-t)Y \quad t = \frac{\tau}{Y}$$

$$Y^D = 100 + 0,9(1-0,4)Y + 200 + 500 + 300 - 0,04Y$$

$$Y^D = 1100 + 0,54Y - 0,04Y$$

$$1Y^D = 1100 + 0,5Y$$

$$0,5Y = 1100$$

$$Y = 2200$$

Y nur I = S

②

Inv.-struktur

$$I_{\text{brutto}} = I_{\text{brutto}} + I_{\text{netto}}$$

200

50 ✓  
Abnahme

150 ✓

∴

③

$Y^* \uparrow \leftarrow t \downarrow ?$

$Y^* \uparrow \leftarrow t \uparrow ?$

$t \downarrow \rightarrow Y_C^D \uparrow \rightarrow Y \uparrow$

aber

$\tau \downarrow \rightarrow Y_G^D \downarrow \rightarrow Y \downarrow$

aber

$Y_C^D$  kredit für  $\tau \uparrow$

oder

Laffer-Effekt

