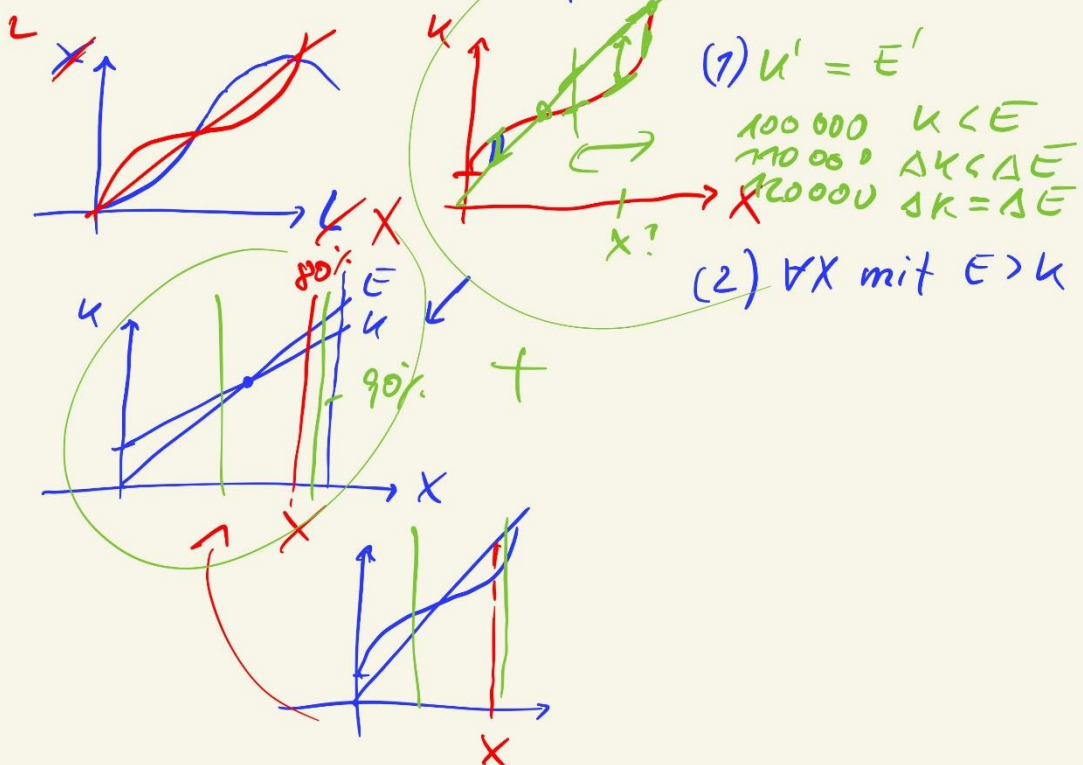
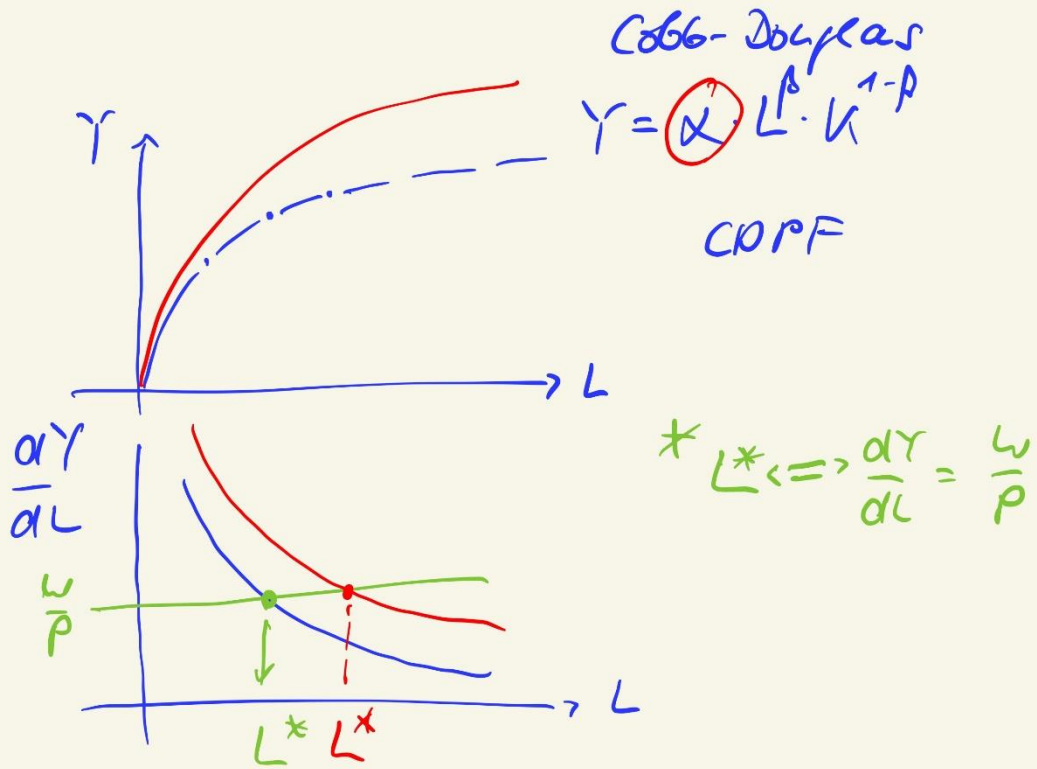


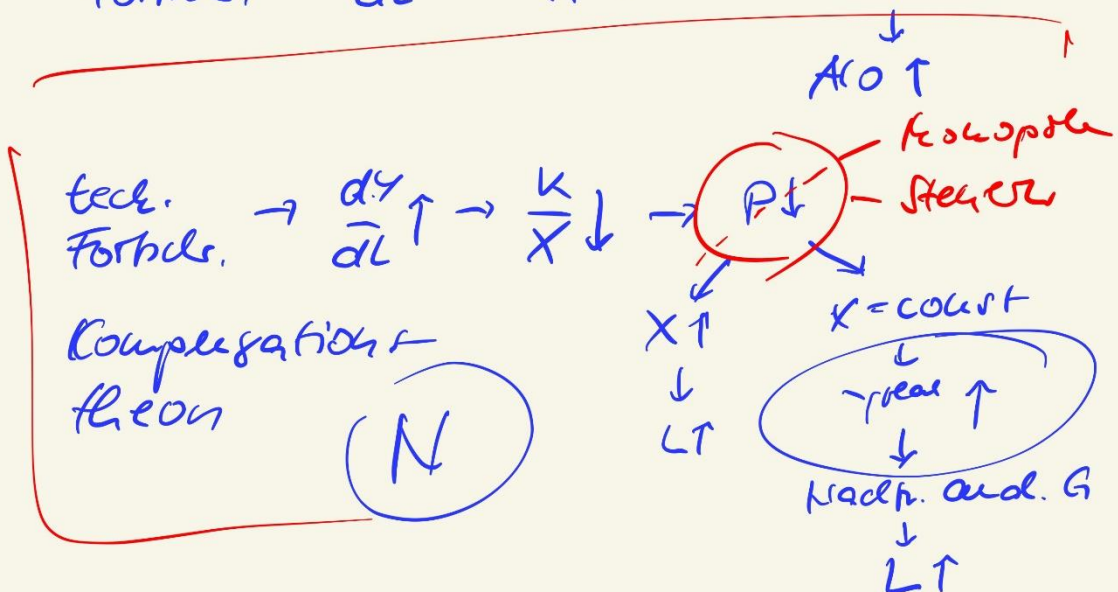
MS Prod.-funktion

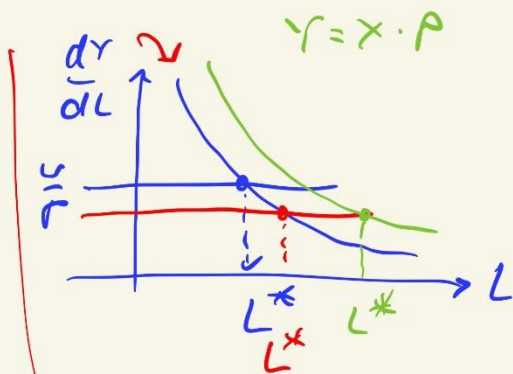




1821 Ricardo: Frisetzemptheorie

tech. Fortsch.  $\rightarrow \frac{dY}{dL} \uparrow \rightarrow \frac{K}{X} \downarrow \rightarrow P \downarrow \quad X = \text{const}$





$PT \rightarrow \frac{v}{p} \downarrow \rightarrow L \uparrow \textcircled{1}$   
 $\rightarrow r \uparrow (= x \cdot p)$   
 $\uparrow \frac{dr}{dL} \rightarrow L \uparrow$

- ① bei Lohnmillekion
- ② überdurchs-A  
 $\downarrow r^0 \uparrow$