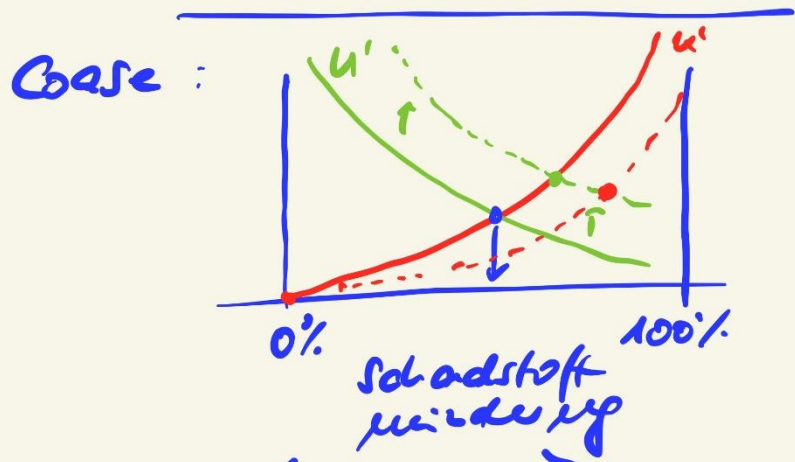
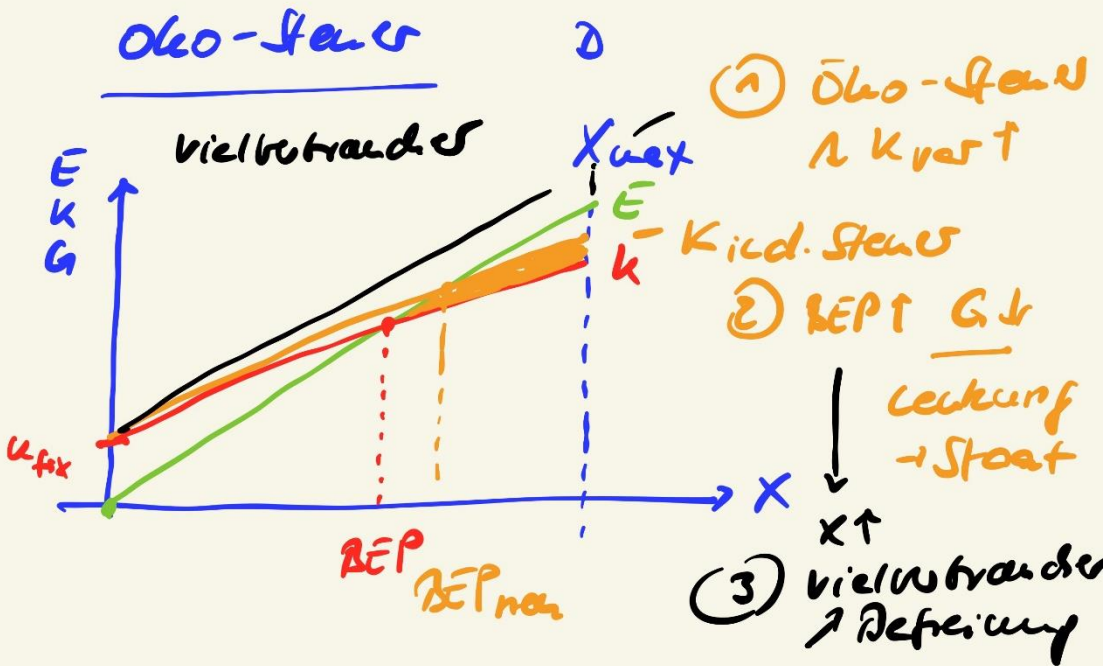
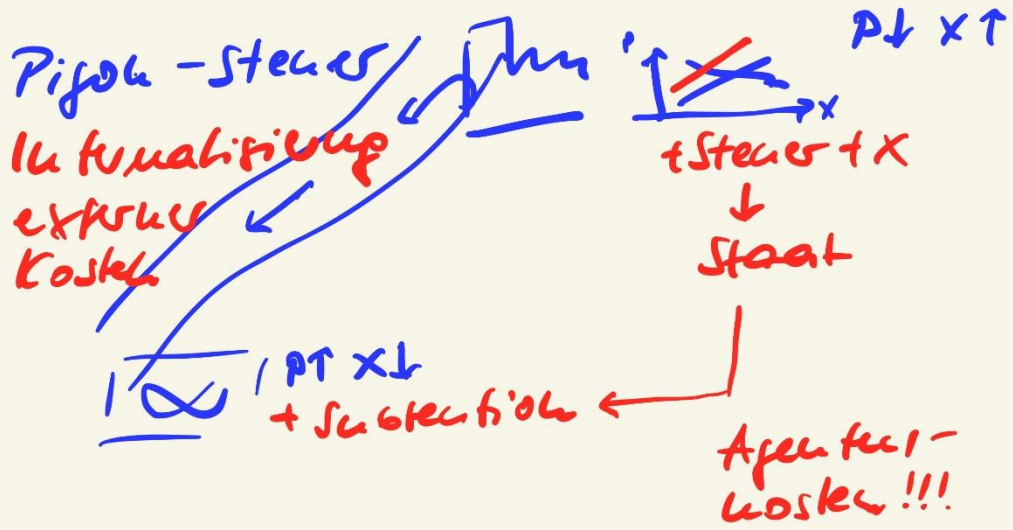


- Folge-Interventionen
 Subv. Lenkungen
 a) Staat
 b) Quersubventionen
 c) Preise

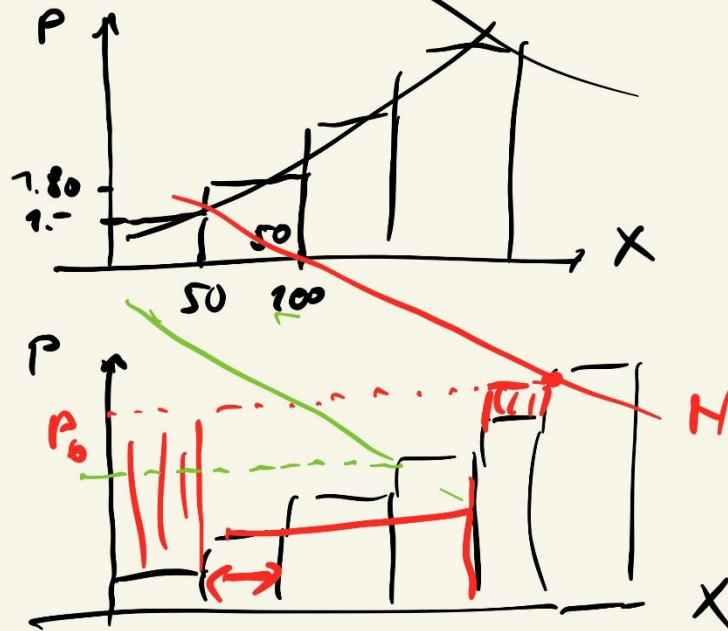
Staat \rightarrow Umwelt



- Ökologie vs. Ökonomie
- (1) Kosten \rightarrow Grenzer \rightarrow tech. Normen
 - (2) Öko-Steuer
 - (3) Emissionshandel
- Ökologie durch Ökonomie

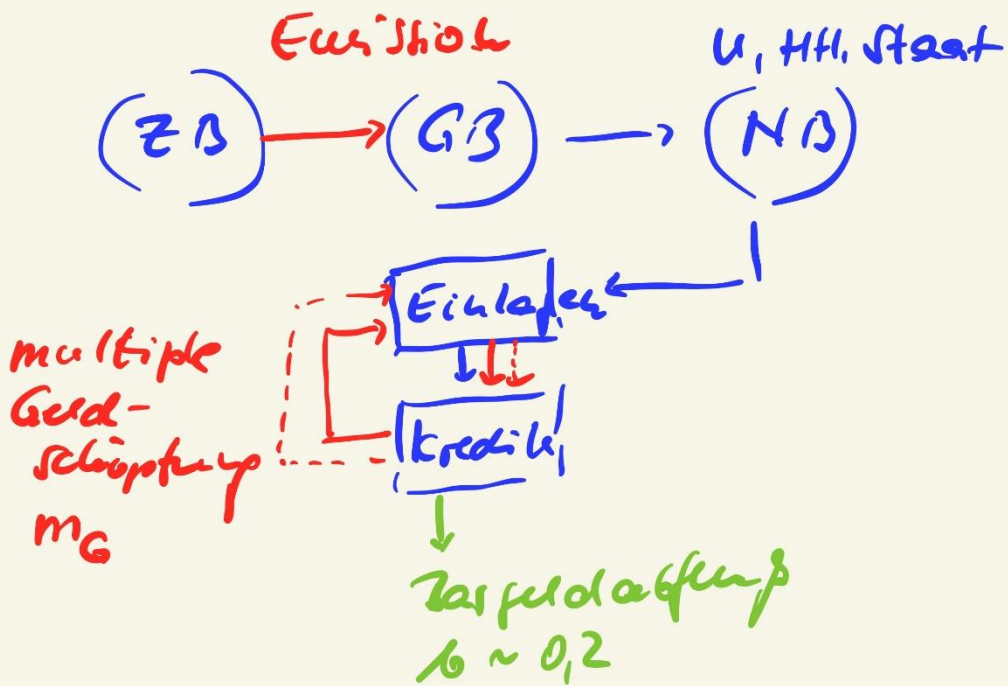


Messit ordet freishall

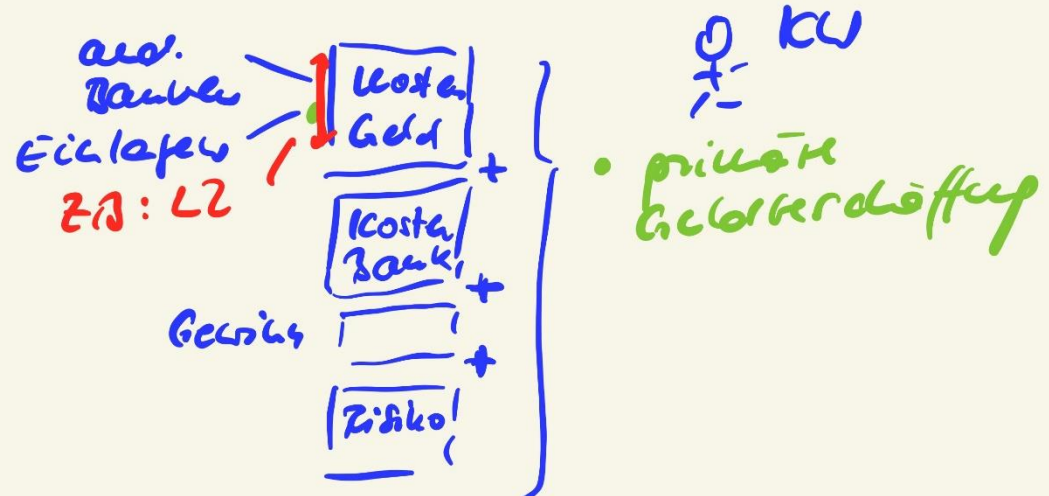


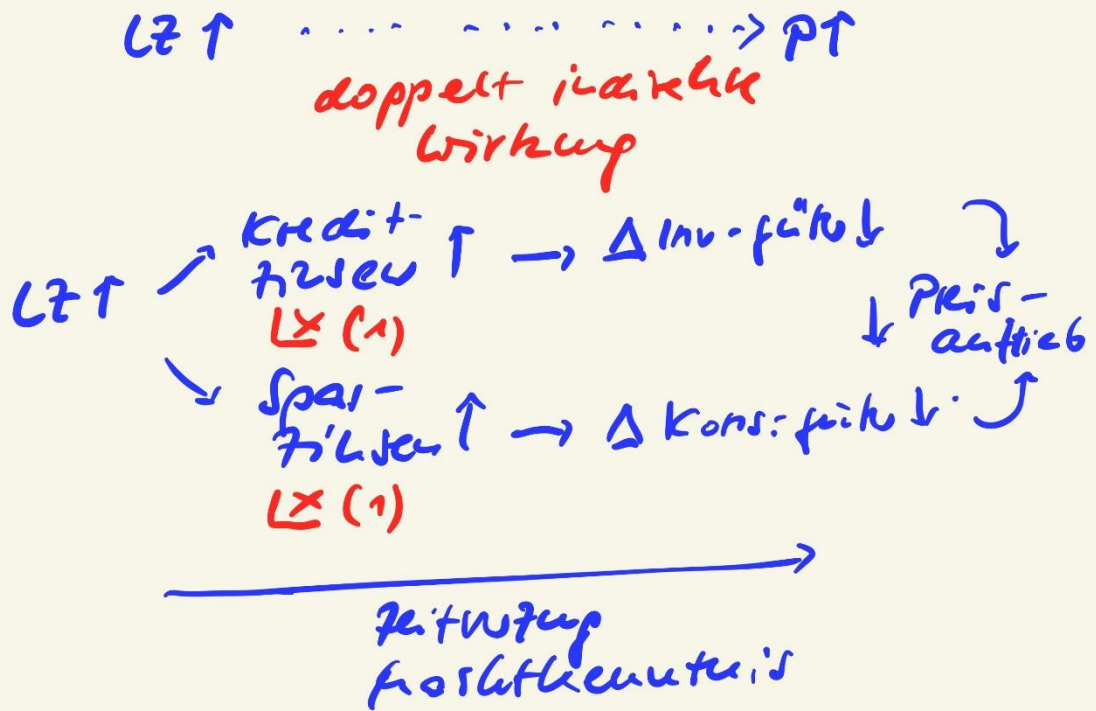
Geld

LZ
dine
Kaufgeld
dipfale €



Leitzinssatz
 ↓
 k' für Geld
 Zirkulation





optimale LZ? Taylor-
Regel

opt. LZ	=	Lauf- frist opt. LZ 2%	+	Inter- rate 2,4%	+	0,5 Abw. von Infl- Ziel +0,4%	+	0,5 Abw. vom Prod.- Ziel (\rightarrow 2,5%) -2,5%
= <u><u>3,55%</u></u>								